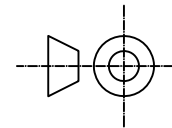
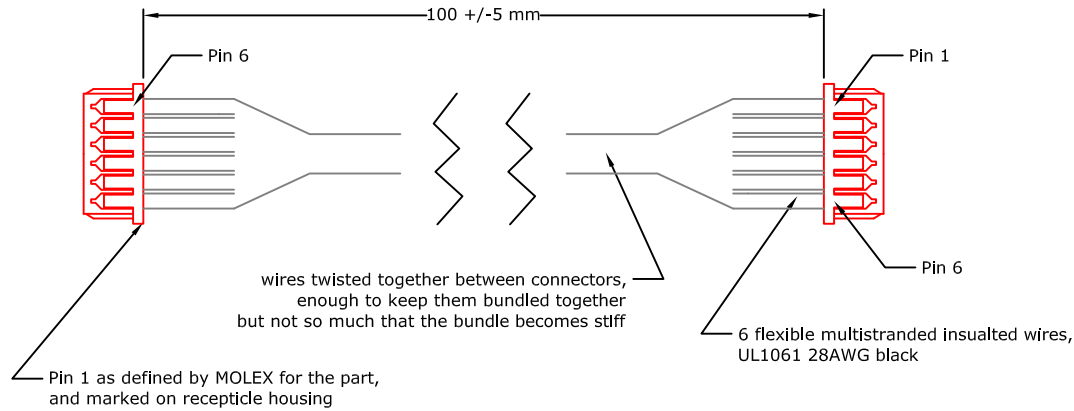


P1 and P2 MOLEX PicoBlade connector  
receptacle housing P/N 51021-0600  
with 6 off matching crimp terminals 50058-8000



| Wiring from P1 to P2 |               |             |
|----------------------|---------------|-------------|
| P1 pin number        | P2 pin number | Signal name |
| 1                    | 1             | SA          |
| 2                    | 2             | VREF        |
| 3                    | 3             | CA          |
| 4                    | 4             | SB          |
| 5                    | 5             | CB          |
| 6                    | 6             | EX          |

© Cambridge Integrated Circuits Limited 2013 - 2024  
6-way Dual PicoBlade Cable  
Test procedure: continuity from each pin of P1 to  
equivalent pin of P2

CambridgeIC part number 013-6019\_0002  
Drawn by: David Ely  
Email: dely@cambridgeic.com  
Tel: 01223 413500

All dimensions in mm