

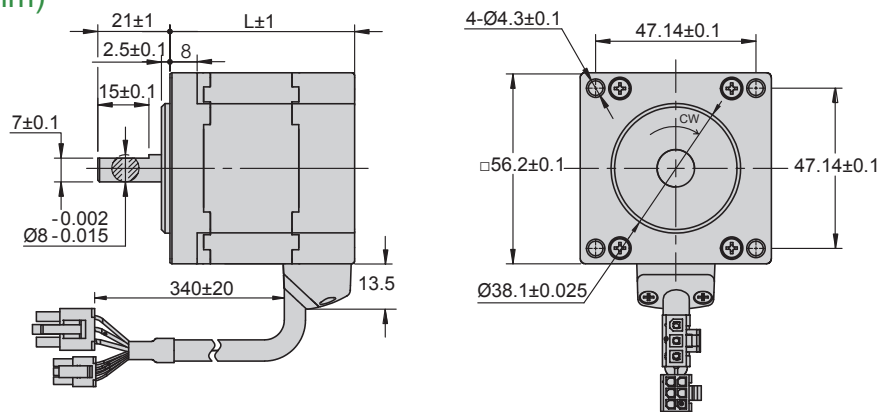
# 57 BLD Motor

## Technical specification

	Symbols	Units	Type				
			AM57BL60L2	AM57BL60L4	AM57BL120L2	AM57BL120L4	AM57BL180L4
		mm	57	57	57	57	57
length	L	mm	54.5	54.5	82.5	82.5	120.5
Input voltage	Un	VDC	24	48	24	48	48
Rated power	Pn		60	60	120	120	180
Phase number	P		3				
Rated speed	Nn	RPM	4000	4000	4000	4000	4000
Max. speed	Np	RPM	5000	5000	5000	5000	5000
Rated torque	T	Nm	0.145	0.145	0.29	0.29	0.43
Max. torque	T max	Nm	0.29	0.29	0.58	0.58	0.86
Rated current	I	Arms	3.2	1.6	6.9	3.0	4.5
Max. current	I max	Arms	6.4	3.2	13.8	6.0	9.0
Voltage ± 10%		Vrms/Krpm	3.08	6.35	3.00	6.4	6.45
Torque ± 10%		Nm/Arms	0.045	0.090	0.042	0.097	0.096
Moment of inertia		g.cm <sup>2</sup>	148	148	279	279	456
Resistance ± 10%(25°C)	R	Ω	0.48	1.8	0.18	0.76	0.44
Inductance	L	mH	0.45	1.9	0.18	0.84	0.54
Sensor			Hall				
Ins.class			E				
Protective rating			IP40				
Storage temperature			-25~+70°C				
Operating temperature			0~+40°C				
Operating humidity			85% RH or below (noncondensing)				
Operating environment			Outdoor (no direct sunlight), no corrosive gas, no flammable gas, no oil mist, no dust				
Altitude			1000m or below				

## Mechanical Dimension(Unit:mm)

Series	length
	mm
AM57BL60L2	54.5
AM57BL120L2	82.5
AM57BL180L4	120.5



## Torque Curves

