




QP-BITEE-0050-10
BIAS TEE 30 kHz-50 GHz

TEST REPORT
TRP 1814-21-1

REVISION			
Number	Date	Chapters	Reason of change
001	04/06/2021	All	New document
002	07/06/2021	2, 3	Isolation plots

PREPARED BY:	REVISED BY:	REVISED AND APPROVED BY:

	TEST REPORT		
	Number: 1814-21-1	Revision: 002	Date: 07/06/2021

INDEX

1. DATASHEET	3
2. ELECTRICAL TEST	4
3. DATA PLOT.....	5
4. DEVICE PICTURES	9
5. CONCLUSION.....	10

LIST OF FIGURES

Figure 1: Product datasheet	3
Figure 2: IL/VSWR – 30 kHz-10 MHz – S/N 003.....	5
Figure 3: IL/VSWR – 10 MHz-50 GHz – S/N 003.....	5
Figure 4: DC to RF+DC Isolation – 10 MHz-50 GHz – S/N 003.....	6
Figure 5: IL/VSWR – 30 kHz-10 MHz – S/N 004.....	7
Figure 6: IL/VSWR – 10 MHz-50 GHz – S/N 004.....	7
Figure 7: DC to RF+DC Isolation – 10 MHz-50 GHz – S/N 004.....	8
Figure 8: Device picture.....	9

LIST OF TABLES

Table 1: Test setup	4
Table 2: Test results	4



TEST REPORT

Number:
1814-21-1

Revision:
002

Date:
07/06/2021

Page:
3 of 10

1. DATASHEET

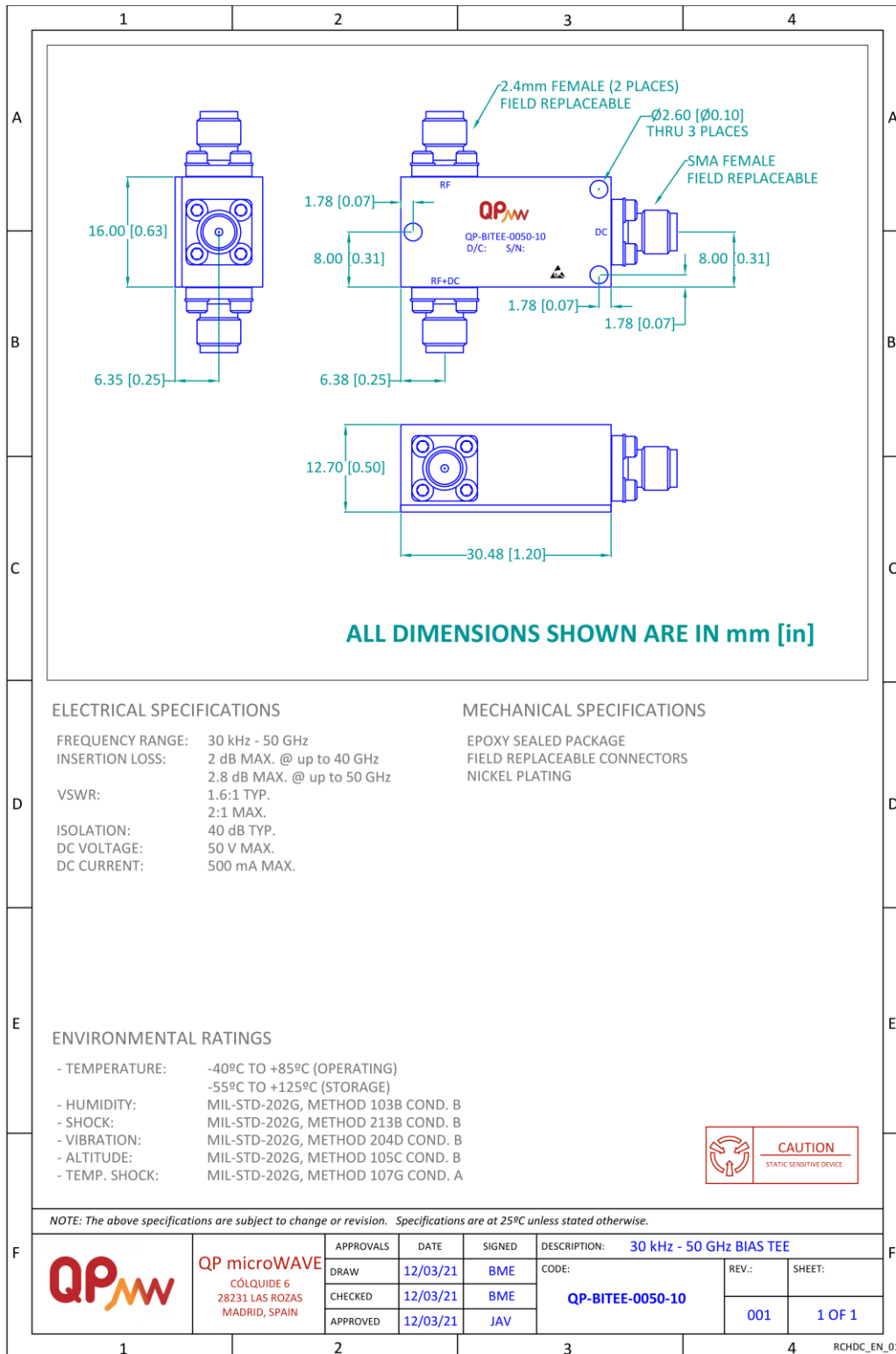


Figure 1: Product datasheet



TEST REPORT

Number:
1814-21-1

Revision:
002

Date:
07/06/2021

Page:
4 of 10

2. ELECTRICAL TEST

Table 1 shows the information about the test setup used to characterize the DUT. Table 2 shows the results of the electrical measurements carried out at ambient temperature, unless otherwise stated.

Table 1: Test setup

Part Number	QP-BITEE-0050-10
Customer	Altaix Electrónica S.A.
Customer PO / Position	7916 / 1
Date Code	2221
Equipment:	
- VNA	Keysight N9918A (SN MY53103922)
- VNA	R&S ZVA50 (SN 1145-1110K50-100228TU)
Tested by	Beatriz Mencía Oliva

Table 2: Test results

Parameter	Spec.	S/N 003	S/N 004		
Frequency range (GHz)	0.03-50	PASS	PASS		
Insertion loss (dB) @ up to 40 GHz	2 Max.	PASS	PASS		
Insertion loss (dB) @ up to 50 GHz	2.8 Max.	PASS	PASS		
VSWR	1.6:1 Typ. 2:1 Max.	PASS	PASS		
Isolation (dB)	40 Typ.	PASS	PASS		
DC voltage (V)	50 Max.	By design	By design		
DC current (mA)	500 Max.	By design	By design		



TEST REPORT

Number:
1814-21-1

Revision:
002

Date:
07/06/2021

Page:
5 of 10

3. DATA PLOT

S/N 003

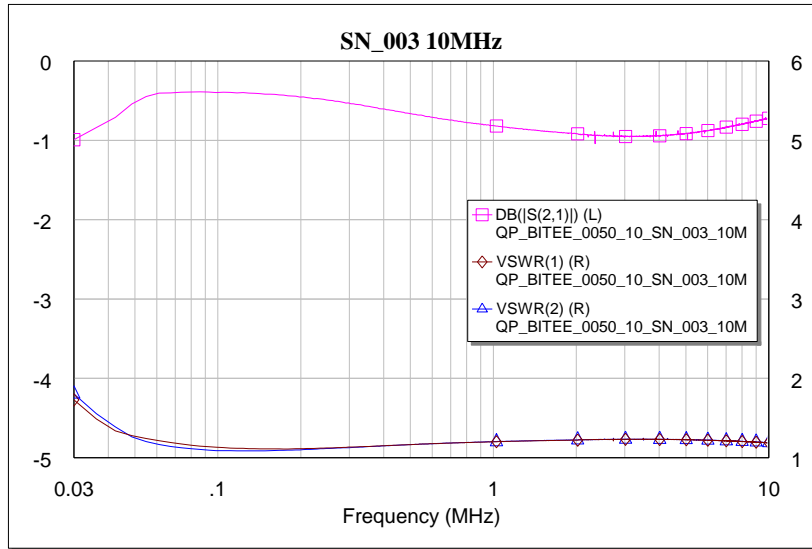


Figure 2: IL/VSWR – 30 kHz-10 MHz – S/N 003

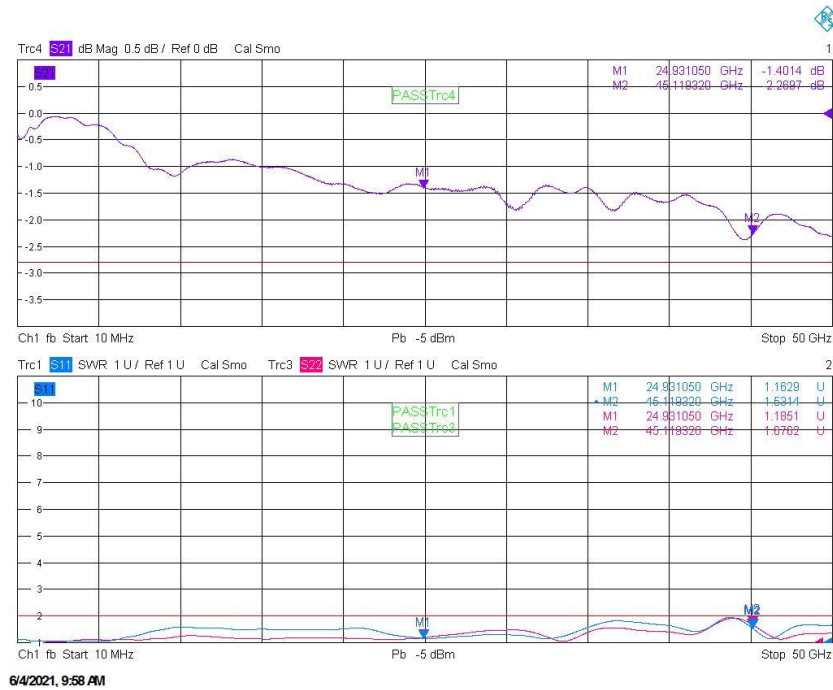


Figure 3: IL/VSWR – 10 MHz-50 GHz – S/N 003



TEST REPORT

Number:
1814-21-1

Revision:
002

Date:
07/06/2021

Page:
6 of 10

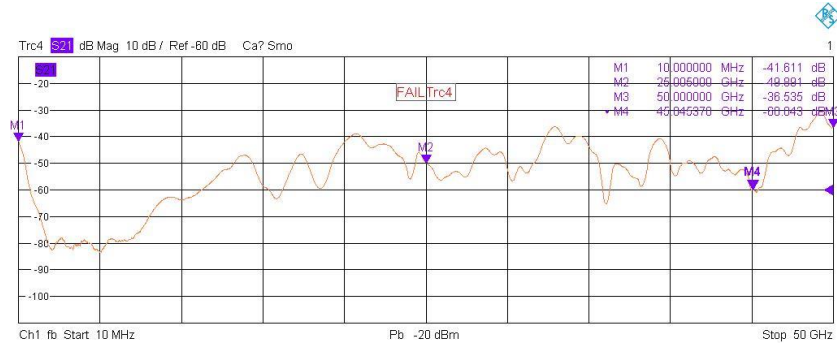


Figure 4: DC to RF+DC Isolation – 10 MHz-50 GHz – S/N 003



TEST REPORT

Number:
1814-21-1

Revision:
002

Date:
07/06/2021

Page:
7 of 10

S/N 004

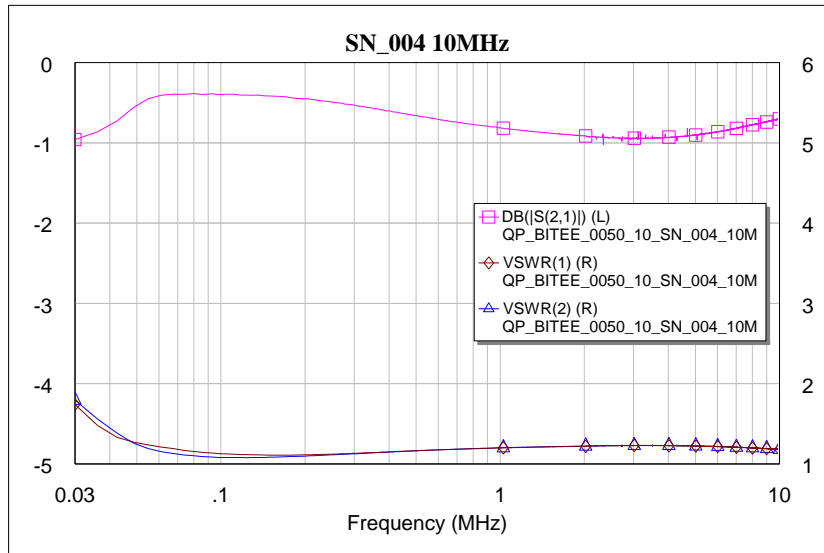


Figure 5: IL/VSWR – 30 kHz-10 MHz – S/N 004

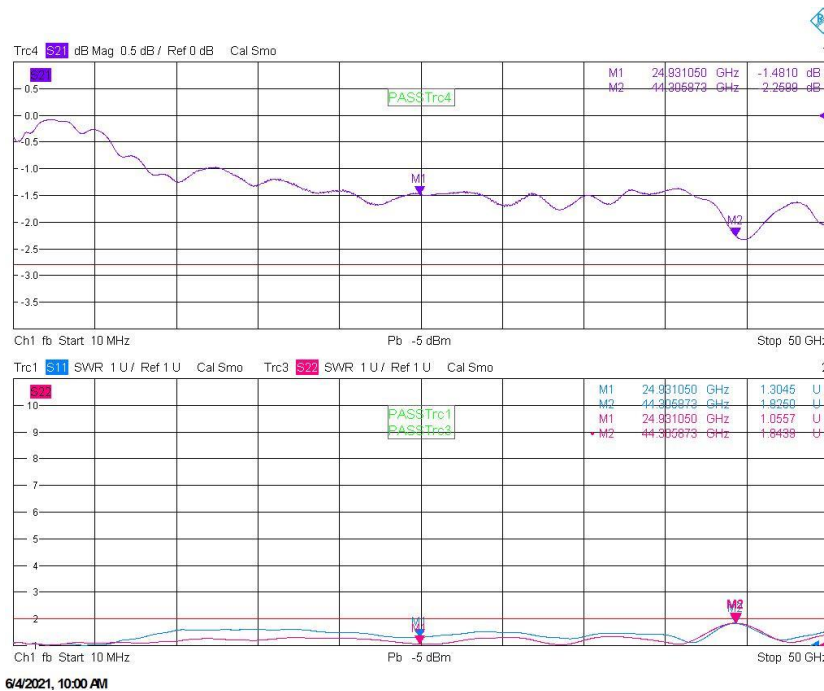


Figure 6: IL/VSWR – 10 MHz-50 GHz – S/N 004



TEST REPORT

Number:
1814-21-1

Revision:
002

Date:
07/06/2021

Page:
8 of 10

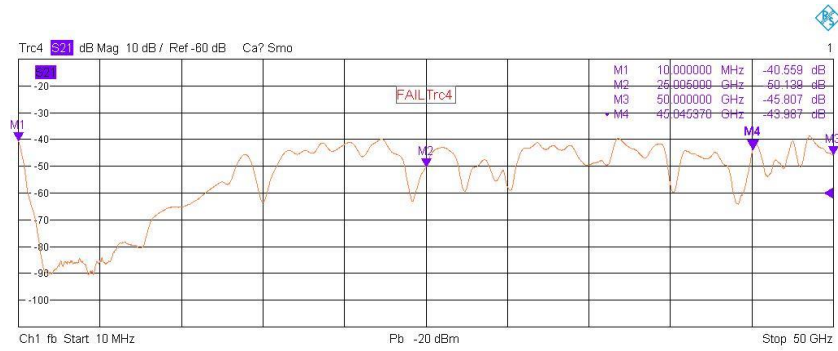



Figure 7: DC to RF+DC Isolation – 10 MHz-50 GHz – S/N 004

	TEST REPORT		
	Number: 1814-21-1	Revision: 002	Date: 07/06/2021

4. DEVICE PICTURES



Figure 8: Device picture



TEST REPORT

Number:
1814-21-1

Revision:
002

Date:
07/06/2021

Page:
10 of 10

5. CONCLUSION

The devices fulfil all the specifications detailed in the datasheet (PASS).